

RF-ISight – Multifunctional Near-Field Analytical Tool

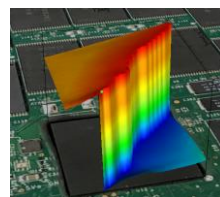
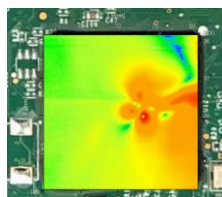
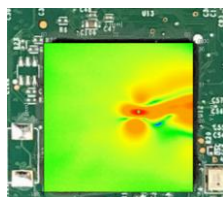
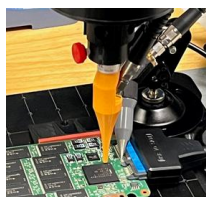


The APREL RF-ISight software application is designed to process experimental data from the near-field assessment of ICs, PCBs, mobile devices, antennas, and electronic assemblies. This software evaluates complex field interference, signal and power integrity, reactive energy, stochastic waves, backscattering, Poynting vector, and phase. It is developed to identify weaknesses in a design that may lead to issues related to power integrity, signal integrity, EMC, and MPE.

Built to read data files from the EM-ISight automated near-field scanning system, the RF-ISight application transforms measurement files into a complex electromagnetic field format. The solution includes an export tool to support HFSS format, enabling further analysis using simulation software such as ANSYS. It can be used to detect faults during and after the development and integration of an electronic device.

Solution Includes

	Description
EM-ISight Scanning System	Complete suite of measurement tools for near-field measurement running EM-ISight V5.4 Setup DUT within EM-ISight application, expose location to radiated signal, review results Control Signal Generator; Frequency, Sweep, Power. Control DMM; Level and signal type. User can define low to high power steps for each frequency and spatial location.
Electromagnetic Field Solution	Magnetic Complex Vector Field Electric Complex Vector Field Quasi-Static Power Density Poynting Vector Radiation Patterns Phase Front, Passive/Active Phase Beam Forming
Applications	Integrated Circuit/Printed Circuit Board: interference patterns, noise source identification, active phase front analysis, reactive energy, stochastic signals, quasi-static vector, Power and Signal Integrity Mobile Device: power density, broad-band modulated signal assessment, electromagnetic exposure evaluation, Signal and Power Integrity Antenna: patch, phase-array, stand-alone: near-field interference, reactive energy, signal path loss, beam forming, active and passive phase front
Operating System	Windows 10 – 11 64 Bit Pro
Light Version	RF-ISight Light is available to all users of EM-ISight (under maintenance) at no cost



NOTE: This software is only available for use with on the EM-ISight System

Please contact your local agent or distributor for more information.

*Equipment NOT included. **RF Disturbance Source needs a signal generator which can be quoted if required

